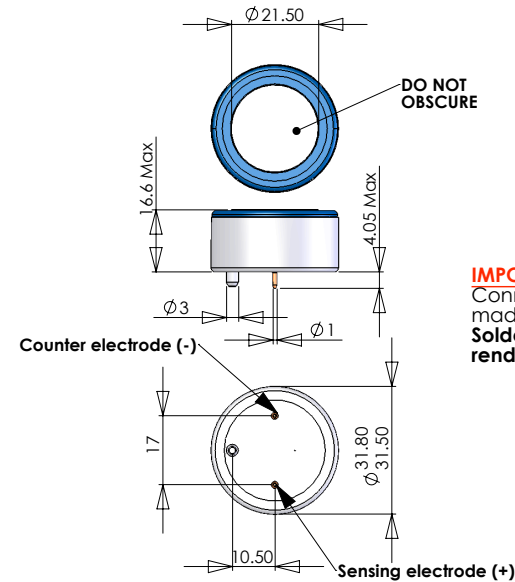
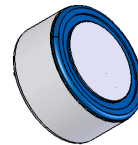


MRB SCIENTIFIC LTD *A fresh approach to gas sensing.*

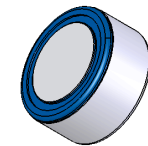
S+70X Compact Oxygen Sensor

Performance Characteristics	
Output signal	0.195 ± 0.3 mA
Pressure Coefficient	< 0.05% signal/ mbar
T90 Response Time	<20 seconds
Nominal Range	0 - 25% Oxygen
Maximum Overload	30% Oxygen
Expected Operating Life	24 months in air
Operating Humidity	0 to 99% RH
Temperature Range	-35°C to + 50°C
Pressure Range	Atmospheric ± 10%
Long Term Output Drift	< 10% over operating life
Temperature Coefficient	0.3% signal/°C
Recommended Load Resistor	100 ohms

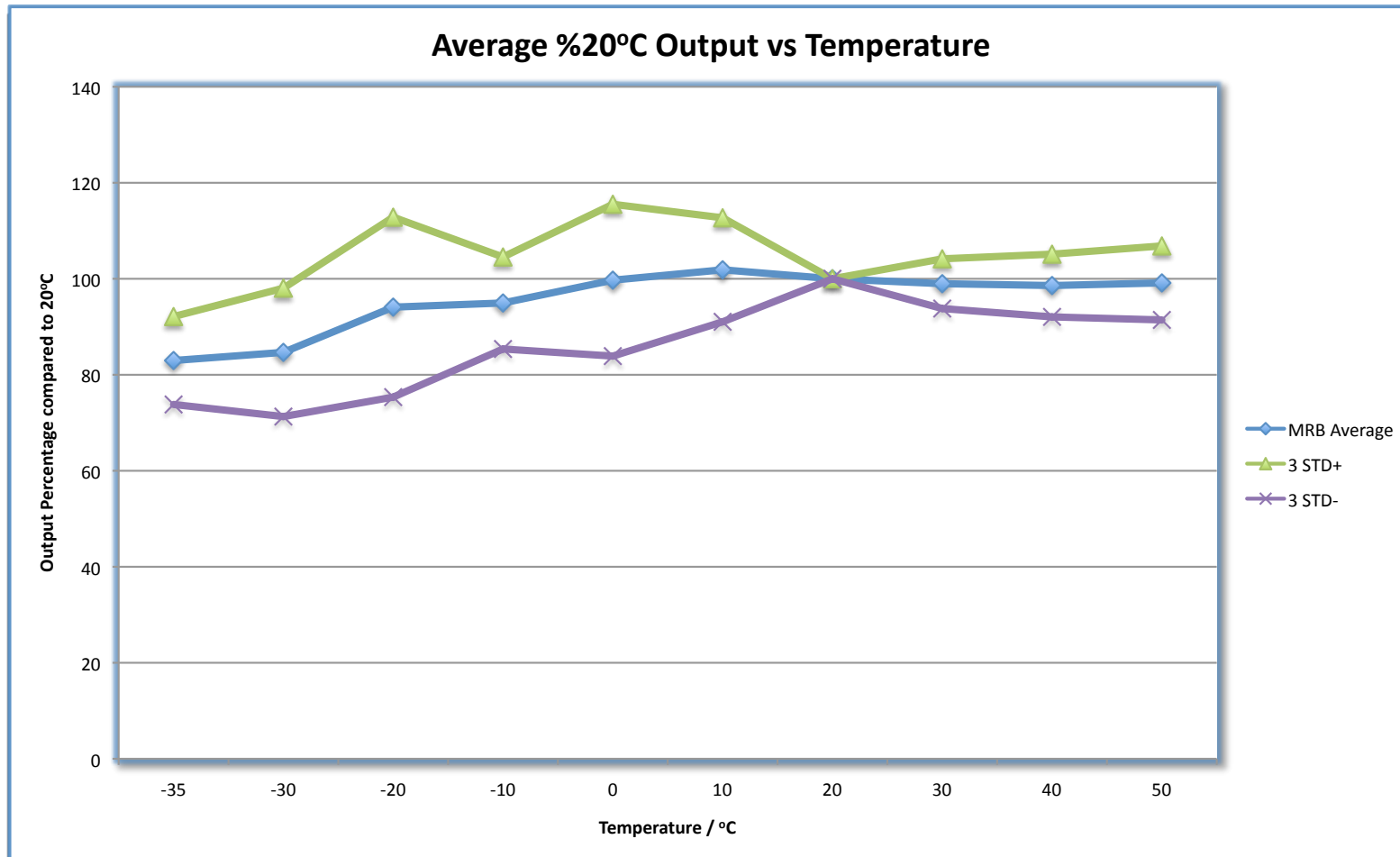


IMPORTANT:
Connection should be made via PCB sockets. **Soldering the pins will render the warranty VOID.**

All Dimensions are in mm.
All tolerances +/-0.15 unless stated.



MRB SCIENTIFIC LTD, UNIT 25 THE OAKWOOD CENTRE, DOWNLEY ROAD, HAVANT, PO9 2NP, UK



Every effort has been made to ensure the accuracy of this document at the time of printing. In accordance with the company's policy of continued product improvement MRB SCIENTIFIC Limited reserves the right to make product changes without notice. No liability is accepted for any consequential losses, injury or damage resulting from the use of this document or from any omissions or errors herein. The data is given for guidance only. It does not constitute a specification or an offer for sale. The products are always subject to a program of improvement and testing which may result in some changes in the characteristics quoted. As the products may be used by the client in circumstances beyond the knowledge and control of MRB SCIENTIFIC Limited, we cannot give any warranty as to the relevance of these particulars to an application. It is the clients' responsibility to carry out the necessary tests to determine the usefulness of the products and to ensure their safety of operation in a particular application. Performance characteristics on this data sheet outline the performance of newly supplied sensors. Output signal can drift below the lower limit over time.